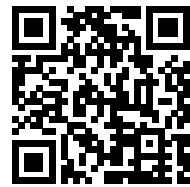


- TOSHIBA POWER ELECTRONICS DIVISION:**
- Uninterruptible Power Systems
 - Rechargeable Batteries
 - Power Conditioning Systems
 - Remote Monitoring

TOSHIBA
Leading Innovation >>>
www.toshiba.com/tic

MONITORING SOLUTIONS >>>>

UNINTERRUPTIBLE POWER SYSTEMS >>>>



REMOTEYE® MULTI-PROTOCOL UPS MANAGER

RemotEye® is a complete management solution for Toshiba uninterruptible power systems (UPS). Designed to control and monitor Toshiba UPSs via the internet, RemotEye utilizes Simple Network Management Protocol (SNMP), Hypertext Transfer Protocol (HTTP/web browser), and Modbus TCP/RTU, and BACnet IP/MSTP communications protocols. In addition, when a power outage occurs, email notifications can be sent to the network administrator or maintenance personnel. Should a prolonged power outage occur, RemotEye can initiate an orderly shutdown command to connected servers to minimize any risk of data loss.

The latest product version, RemotEye® 4, includes upgrades such as a customizable dashboard, UPS Home Group, user defined reminders, mobile-friendly web site, and built-in firewall.

Scan the QR code to view a live demo online.

	RemotEye® II / Internal or External Hardware	RemotEye® III / Internal Hardware	RemotEye® 4 Internal Hardware
Model Numbers	Internal Part #: RMTI-INT-R4 External Part #: RMTI-EXT-R4	RMTI-3	RMTI-4
Package Content	UPS power provided, 6ft configuration cable, user manual, MIB files, program files, 120VAC adapter for External model.	UPS power provided, 6ft configuration cable, user manual, MIB files, program files	USB Cable (USB A to USB Mini-B), CD (with User Manual, MIB Files, & Program Files), Phoenix 3-pin Connector
Network Port	Auto Sensing 10/100 Mbps Fast Ethernet RJ-45 LAN Connector		
Serial Port	One asynchronous serial port for EMD/Console	One asynchronous serial port for EMD/Console	Three asynchronous serial ports for EMD, Console, & RS-485
Network Protocol	SNMPv1 and SNMPv3 over UDP/IP : HTTP over TCP/IP : ARP, RARP, TFTP, ICMP, Telnet, DHCP, DNS, BOOTP, & SMTP	SNMPv1 and SNMPv3 over UDP/IP : HTTP over TCP/IP : ARP, RARP, TFTP, ICMP, Telnet, DHCP, DNS, BOOTP, SMTP, & Modbus TCP	SNMPv1, SNMPv2c, SNMPv3, HTTP, Modbus TCP/RTU, BACNET IP/MSTP, Telnet, ARP, RARP, DHCP, DNS, BOOTP, SMTP, TFTP, PPP, & ICMP
Network Security	SSLv3, SSHv1, HTTPS, RADIUS, SSHv2*, & Built-In firewall* - (*RemotEye 4 only)		
Supported MIB	Toshiba Enterprise v1.3, JEMA, RFC1628	Toshiba Enterprise RMTI-3 1600XP MIB, Toshiba Enterprise RMTI-3 4300 MIB, JEMA & RFC 1628	TIC-RMTI4-T1000-MIB, TIC-RMTI4-1600XP(i)-MIB, TIC-RMTI4-4300-MIB, TIC-RMTI4-4400-MIB, TIC-RMTI4-G9000-MIB, TIC-RMTI4-SYS-MIB & RFC1628
Operating Temperature	0 - 40°C		-20 - 60 °C
Operating Humidity	10 - 80%		
Power Input	8 - 12 VDC Unregulated	8 - 15 VDC Unregulated	7.5 - 16 VDC Unregulated
Power Consumption	Internal: 1.5 Watts maximum External: 2.0 Watts maximum	3.0 Watts Maximum	6.0 Watts Maximum
Size	Internal Card: 130 mm (5.12") x 60 mm (2.36") (L x W) External Card: 134 mm (5.28") x 86 mm (3.40") x 27 mm (1.10") (L x W x H)	65.8mm (2.59") x 60.0mm x (2.36") x 19.9mm (0.78") (L x W x H)	65.8mm (2.59") x 60.0mm x (2.36") x 19.9mm (0.78") (L x W x H)
Weight	Internal: 80 gm (0.2 lbs) External: 170 gm (0.38 lbs)	80 gm (0.2 lbs)	80 gm (0.2 lbs)
Regulatory	RoHS FCC Class A : CE Class A, *UL, *CUL (*RemotEye II External)	RoHS, CE, FCC Class B	RoHS, CE, FCC Class B
Capability	Internal: 1000, 1600EP, 1700, 1800 External: 1000, 1400, 1500, 1600EP, 1700, 1800, 4200FA, G8000, G8000MM & G9000	1600XP, 4200FA (touch screen model) & 4300 Series	T1000, 1600XP, 1600XPI, 4300, 4400, & G9000

ENVIRONMENTAL MONITORING DEVICE (EMD)

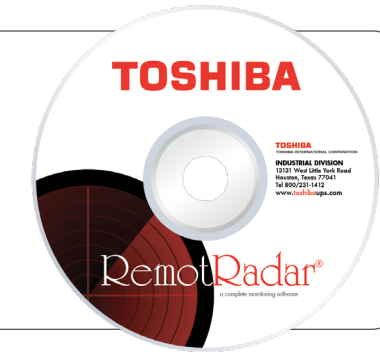


Part# RMTI-EMD-HT
Dimensions 2.26" (W) x 1.48" (H)

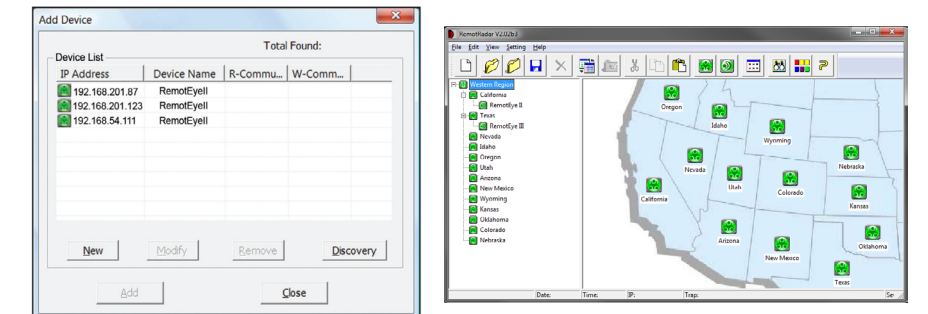
The environmental monitoring device (EMD) is an auxiliary device for the RemotEye Series and Remote-D. This enables the RemotEye and Remote-D to provide real-time comprehensive remote monitoring of environmental temperature, humidity, and other environmental conditions through its two user-defined dry contact inputs. These conditions can be monitored via the RemotEye and Remote-D web interface (HTTP), SNMP, Modbus TCP/RTU, and BACnet IP/MSTP capabilities. In addition, the EMD can be used with the RemotEye sensor pack which allows for monitoring of other conditions such as intrusions, vibrations, smoke, and water leak detections.

REMOTRADAR®

The RemotRadar® application software enables global, real-time monitoring of up to 5,000 RemotEye devices and standalone Remote-Ds combined. The Graphical User Interface (GUI) allows users to choose between list and graphical map presentations for easier navigation. RemotRadar also features text message and email notifications for up to 16 recipients with the option to sort different types of alerts to specific recipients.



Part# REMOTRADAR
(Compatible with Windows)



Part# PROTOCESSOR
Dimensions 4.5" (W) x 3.5" (D) x 0.90" (H)

PROTOCESSOR

The industrial bus product, ProtoCessor, is designed to provide a reliable interface between a variety of Toshiba's uninterruptible power systems and building management systems. ProtoCessor converts real-time UPS data into the user's Building Management System protocols. ProtoCessor supports SNMP, Modbus RTU, Modbus TCP, BACnet IP, BACnet MSTP, AB EtherNet/IP, and Metasys N2 industrial protocols. ProtoCessor hardware connectivity includes two DB9 (RS232 and RS485) connectors which enable users to connect to DTE-type devices, and a RJ45 connector for network connectivity. Supports both Toshiba G8000 and G9000 UPS series.